



## SCAIDER CAMERA HD

### Overview

In long distance races, some athletes may be difficult or even impossible to identify, as their lateral leg bib is often lost during the race.

The brand new Swiss Timing Scaider Camera HD brings valuable help for judging photo finish images. It allows you to write the finish protocol and to get live confirmation of the athlete's identity by showing the front bib of the athlete as soon as you click on his chest in the Scan'O'Vision software.

It is synchronised with the Photofinish clock and shoots front Full HD pictures of the athletes at 25 images/s.

Its powerful integrated 12x zoom lens allows to place it 10m past the finish line to have the best angle and the sharpest pictures to read the bibs.

The power is brought through the Ethernet cable from the Regie.

### TOP FEATURES

- Easier photo finish judging
- Quick identification of the athlete bib
- Background recording. Images available before the end of the race
- Perfect integration with Scan'O'Vision Photofinish camera
- Full HD pictures
- Power Over Ethernet (POE): only 1 cable needed

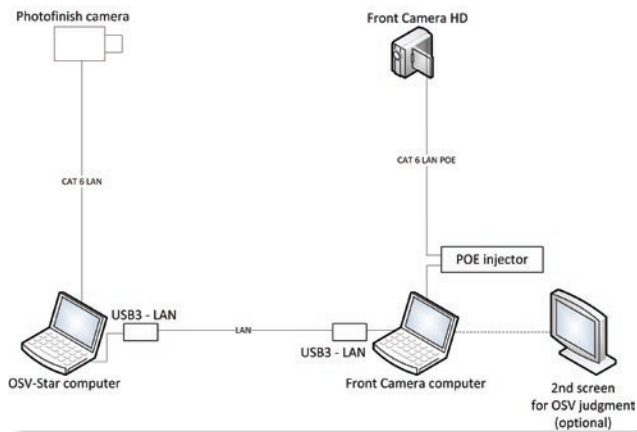


Scaider Camera HD – Companion to Scan'O'Vision

## FRONT CAMERA - SPECIFICATIONS

Scaider Camera HD	3511.900
Lens	Integrated 12x zoom motor lens
Dimensions (HxWxL)	76 x 79 x 187 mm
Weight	0.485 kg
Resolution	1920x1080px Full HD
Frame rate	25 fps
Connection	Gigabit LAN, up to 70m
Power	Power Over Ethernet, POE
Temperatures	-5°C to +45°C
Protection class	IP43
Certifications	CE and RoHS compliant

## SCHEMATIC



## KIT CONTENTS

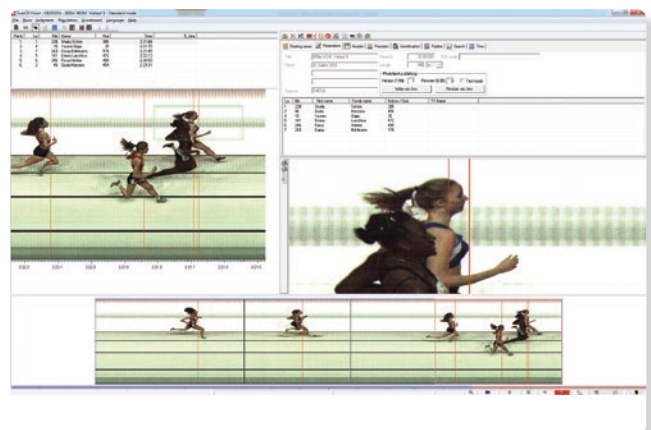
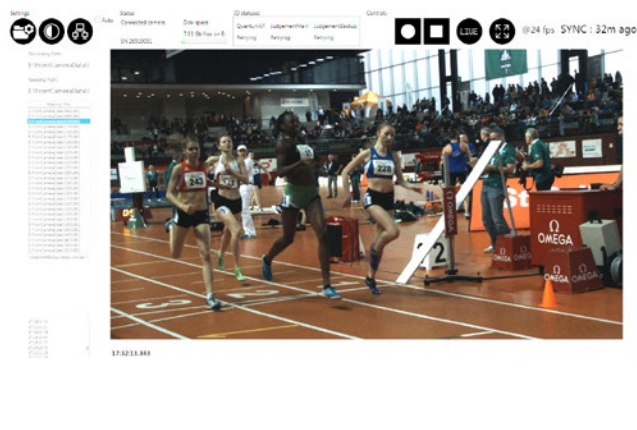
- Front Camera HD
- Power supply
- USB3 – Gigabit Ethernet adapter
- Ethernet cable CAT6 2m (local)
- 2 axes mounting support
- Software with USB protection dongle
- User's manual
- Carrying case

## Options:

- Tripod (ref. 9051.6339)
- Ethernet cable on winder 50m (1945.050) and 70m (1945.070)

## LAPTOP SPECIFICATIONS

- Screen 15", Full HD resolution 1920x1080
- Microsoft Windows 7 64 bit
- SSD HDD 256Gb or larger
- RAM 8Gb
- i7 4th generation. Dedicated Nvidia GPU
- Ethernet LAN Gigabit RJ45 onboard with jumbo frames
- 4x USB ports, 1 of which USB3(SS)



The front picture of the athletes (left) is synchronised with the photo finish in OSV-Star software (right).

Intellectual property of Swiss Timing. All rights reserved, especially those of reproduction and distribution to third parties.

Swiss Timing LTD  
P.O. Box 138, Rue de l'Envers 1  
CH-2606 Corgémont - Switzerland

Phone +41 32 488 36 11  
info@swisstiming.com  
www.swisstiming.com

A COMPANY OF THE SWATCH GROUP